



Cotton This Month

01 September 2020

Changes in Supply and Demand Estimates (from 17 August 2020)

Major changes (larger than 40,000 tons):

<i>Bangladesh</i>	<i>2020/21: consumption 1.4 million tonnes (+ 161,800 tonnes) 2020/21: imports 1.39 million tonnes (+ 161,800 tonnes)</i>
<i>Brazil</i>	<i>2020/21: production 2.5 million tonnes (+ 55,300 tonnes) 2020/21: exports 1.58 million tonnes (+ 95,300 tonnes)</i>
<i>China</i>	<i>2020/21: imports 2 million tonnes (+ 100,000 tonnes)</i>
<i>India</i>	<i>2020/21: imports 370,000 tonnes (- 100,000 tonnes) 2020/21: consumption 5.1 million tonnes (+ 349,400 tonnes)</i>
<i>United States</i>	<i>2020/21: production 3.9 million tonnes (+ 126,000 tonnes)</i>
<i>Vietnam</i>	<i>2020/21: imports 1.48 million tonnes (+ 46,800 tonnes) 2020/21: consumption 1.48 million tonnes (+ 46,300 tonnes)</i>

Minor changes (less than 40,000 tons):

<i>Benin</i>	<i>Kenya</i>	<i>Pakistan</i>	<i>Togo</i>
<i>Burkina Faso</i>	<i>Mali</i>	<i>Senegal</i>	<i>Zambia</i>
<i>Côte d'Ivoire</i>	<i>Nigeria</i>	<i>South Africa</i>	

World Cotton Supply and Demand

	2018/19		2019/20		2020/21	
	million tonnes	change	million tonnes	change	million tonnes	change
Beginning Stocks	18.80	-0.02	18.72	-0.03	21.99	0.02
Production	25.70	-0.02	26.16	0.01	25.05	0.29
Supply	44.50	-0.04	44.89	-0.03	47.04	0.31
Consumption	25.99	-0.02	22.70	-0.25	24.34	0.49
Exports	9.05	0.02	8.80	0.15	9.27	0.20
Ending Stocks	18.72	-0.03	21.99	0.02	22.71	-0.18

ICAC Price Projections

Season-average Cotlook A Index (US cents per pound).

Projections	Previous Month		This Month	
	Range	Midpoint	Range	Midpoint
2020/21*	48-77	63	52-80	67

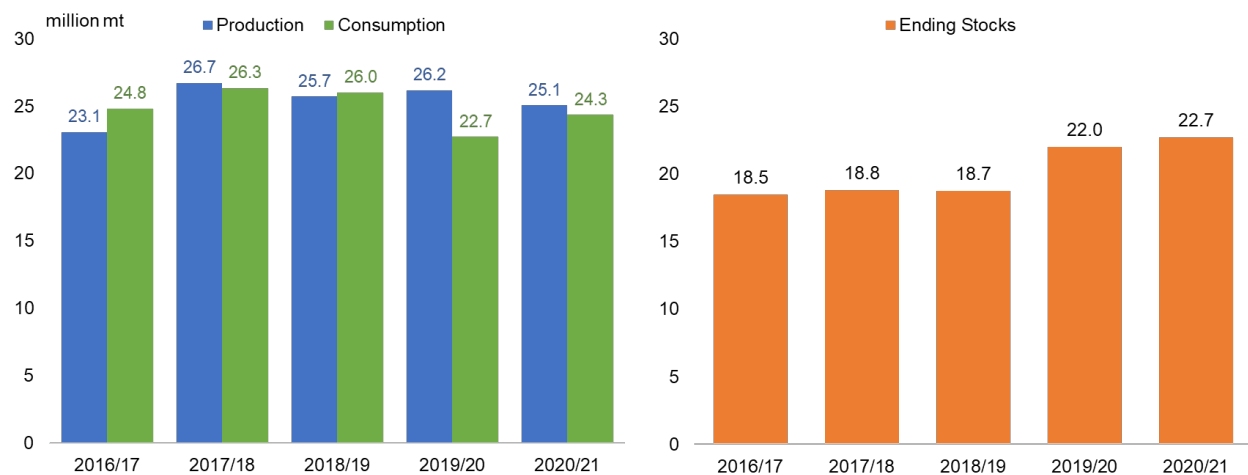
* The price projection for 2020/21 is based on the ending stocks-to-mill use ratio in the world-less-China in 2018/19 (estimate), in 2019/20 (projection) and in 2020/21 (projection), on the ratio of Chinese net imports to world imports in 2019/20 (projection) and 2020/21 (projection), and the price projection for 2019/20. The projection reflects a 95% confidence interval.



Limited Cotton Recovery within Pandemic: Production and Stock Levels High, Slow Consumption Growth

Even as the most stringent containment measures begin to be lifted, the opportunity for economic recovery may not relieve current market uncertainty. Countries vary in their ability to flatten the contagion curve and the fiscal space to mitigate the pandemic associated recession. Global production is expected to decrease to 25.1 million tonnes for the 2020/21 season as low prices and food security concerns have led to less planted area in some countries. Global consumption is expected to increase to 24.3 million tonnes, reflecting a 7.2% growth from the previous season. Following near total stoppage of cotton spinning and textile manufacturing in the March-April period of 2020, activity in major consuming countries began to recover in the final months of the 2019/20 season with factories in Vietnam, Bangladesh and India reporting operations near 75% of capacity by July 2020. However, the limited recovery in consumption growth currently projected remains an early estimate that may still be conditional on economic recovery as countries attempt to contain the pandemic. Even if economic recovery materialises, global production is currently projected to outpace consumption for the second continuous season. Prices already under pressure are likely to remain under pressure with limited consumption growth and rising stock levels. At the current global stock-to-use ratio (0.97), the world has enough quantities of cotton lint in storage for nearly one year of mill-use even with no additional production.

Global Production Outpaces Consumption as Stock Levels Grow



Following two seasons of negative growth, global consumption is expected to increase to 24.3 million tonnes in 2020/21 with China continuing to be the largest consumer at 7.8 million tonnes. India is expected to consume 5.1 million tonnes in 2020/21 with mills in the country reporting a steady return to manufacturing following the initial lockdown measures. Consumption in Pakistan is expected to slow for the second continuous season to 2.2 million tonnes as farmers move to food crops and limited opportunity to import due to foreign exchange. Consumption estimates for Vietnam and Bangladesh have been increased following the growth in imports reported in the last months of the 2019/20 season, signalling recovery. Consumption estimates for Vietnam are currently expected at 1.48 million tonnes for 2020/21 with estimates for Bangladesh at 1.4 million tonnes. As global stocks of cotton continue to increase, spinners may be able to anticipate a period of lower prices for the raw material. However, stockpiled cotton may degrade over time and when released will vie against the current crop.

Global production for 2020/21 is expected to be led by India, who continues to lead by planting over 12 million hectares. While productivity remains an issue for smallholder farms in the country, the 2020/21 crop is currently expected at 6.2 million tonnes. China has continued to reduce area under cotton and is expected to produce 5.7 million tonnes, a second continuous year of contraction. The United States production is expected at 3.9 million tonnes, a 14% decrease from the previous season. Amongst a limited demand outlook, exporters may also face competition from Australia particularly to Asian and Southeast Asian markets, as water availability appears to improve and production is expected to increase to over 300,000 tonnes. Area in Mexico has been reduced by 35% for 2020/21 with production lowered to 227,000 tonnes. Despite export difficulties for West African cotton producing countries at the end of the 2019/20 season, planting for the 2020/21 season has been underway with the area targets of 3.4 million hectares and estimated combined production of 1.4 million tonnes.

COVID-19 has presented an additional challenge to the cotton sector that had already been under pressure from long-term decline in use and declining prices since 2018 stemming from global trade tensions. Should projected economic recovery materialise and subsequent demand growth recover, under the current quantities of global reserves, it may still take additional time for prices to recover.

Prices

The Secretariat's current price projection for the year-end 2020/21 average of the A Index is 67 cents per pound this month.

Cotton This Month is published at the beginning of the month with the Cotton Update published mid-month. The Cotton Update is a mid-month report with updated information on supply/demand estimates and prices. The next **Cotton Update** will be released on **15 September 2020**. The next **Cotton This Month** will be released on **1 October 2020**.

Published at the start of each month by the Secretariat of the International Cotton Advisory Committee,
1629 K Street NW, Suite 702, Washington, DC 20006. Copyright © ICAC 2020.
Telephone: 202-463-6660; email: secretariat@icac.org.
No reproduction is permitted in whole or part without the express consent of the Secretariat.



International Cotton Prices

	Today	Change	Season Low	Season High	1 Year ago	2 Years ago
Current Cotlook A Index	70.85	2.05	68.20	71.60	70.15	92.15
NY Futures Nearby Contract^a	64.41	2.12	61.84	65.16	59.05	82.31
Basis^b	6.44	-0.07	6.34	6.87	11.10	9.84
2020/21 average to date	69.99					
2019/20 average	71.33					

^a Previous day's close.

^b Current A Index minus Nearby NY (previous close).

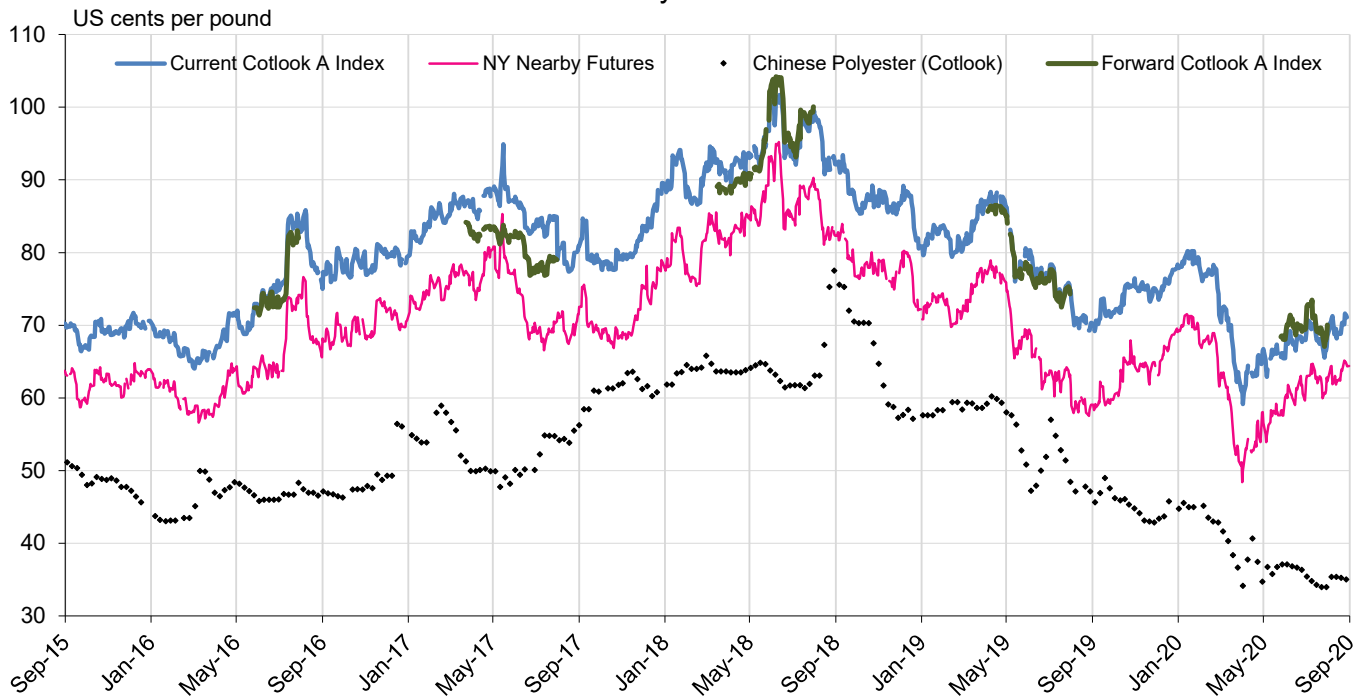
Source: Cotlook Ltd.; quotes in U.S. cents per pound.

China Domestic Cotton Prices

	Today	Change	Season Low	Season High	1 Year ago	2 Years ago
China Cotton Index (3128B)	85.0	3.90	79.9	85.0	82.3	108.4

Source: Beijing Cotton Outlook; mill-delivered prices; quotes in U.S. cents per pound (exchange rate from IMF).

Daily Prices



Published by the Secretariat of the International Cotton Advisory Committee,
1629 K Street NW, Suite 702, Washington, DC 20006. Copyright © ICAC 2020
Telephone: 202-463-6660; email: secretariat@icac.org.

No reproduction is permitted in whole or part without the express consent of the Secretariat.



Supply and Distribution of Cotton

Seasons begin on August 1

	2015/16	2016/17	2017/18	2018/19 Est.	2019/20 Proj.	2020/21 Proj.
million metric tonnes						
Beginning stocks						
World Total	22.94	20.31	18.48	18.80	18.72	21.99
China	14.12	12.65	10.35	9.03	8.88	9.14
USA	0.79	0.83	0.60	0.94	1.08	1.59
Production						
World Total	21.48	23.07	26.71	25.70	26.16	25.05
India	5.75	5.87	6.35	5.35	6.20	6.20
China	5.20	4.90	5.89	6.04	5.80	5.68
USA	2.81	3.74	4.56	4.00	4.34	3.94
Pakistan	1.54	1.66	1.80	1.67	1.32	1.19
Brazil	1.29	1.53	2.01	2.78	2.93	2.51
Uzbekistan	0.83	0.79	0.80	0.64	0.64	0.64
Others	4.07	4.59	5.31	5.22	4.94	4.90
Consumption						
World Total	24.14	24.79	26.35	25.99	22.70	24.34
China	7.60	8.28	8.50	8.25	7.25	7.80
India	5.30	5.15	5.42	5.40	4.25	5.10
Pakistan	2.15	2.15	2.35	2.36	2.20	2.16
Europe and Turkey	1.68	1.61	1.64	1.70	1.62	1.64
Bangladesh	1.32	1.41	1.66	1.58	1.37	1.41
Vietnam	1.01	1.17	1.51	1.51	1.45	1.48
USA	0.75	0.71	0.77	0.63	0.47	0.58
Brazil	0.66	0.69	0.68	0.73	0.61	0.61
Others	3.67	3.64	3.82	3.84	3.48	3.55
Exports						
World Total	7.54	8.19	9.03	9.05	8.80	9.27
USA	1.99	3.25	3.45	3.23	3.35	3.27
India	1.26	0.99	1.13	0.76	0.65	1.16
CFA Zone	0.98	1.00	1.06	1.18	0.97	1.32
Brazil	0.94	0.61	0.91	1.31	1.98	1.58
Uzbekistan	0.50	0.40	0.34	0.13	0.06	0.06
Australia	0.62	0.81	0.85	0.79	0.24	0.27
Imports						
World Total	7.59	8.09	8.98	9.27	8.60	9.27
Bangladesh	1.38	1.41	1.67	1.54	1.37	1.39
Vietnam	1.00	1.20	1.52	1.51	1.46	1.48
China	0.96	1.10	1.32	2.10	1.75	2.00
Turkey	0.92	0.80	0.88	0.76	0.90	0.86
Indonesia	0.64	0.74	0.76	0.69	0.63	0.64
Trade Imbalance 1/	0.06	-0.10	-0.04	0.22	-0.20	0.00
Stocks Adjustment 2/	-0.03	-0.01	0.00	0.00	0.00	0.00
Ending Stocks						
World Total	20.31	18.48	18.80	18.72	21.99	22.71
China	12.65	10.35	9.03	8.88	9.14	8.97
USA	0.83	0.60	0.94	1.08	1.59	1.68
Ending Stocks/Mill Use (%)						
World less China 3/	46	49	55	55	83	83
China 4/	166	125	106	108	126	115
Cotlook Index A 5/	70.39	82.77	87.98	84.35		

1/ The inclusion of linters and waste, changes in weight during transit, differences in reporting periods and measurement error account for differences between world imports and exports.

2/ Difference between calculated stocks and actual; amounts for forward seasons are anticipated.

3/ World-less-China's ending stocks divided by world-less-China's mill use, multiplied by 100.

4/ China's ending stocks divided by China's mill use, multiplied by 100.

5/ US cents per pound.



2018/19 Supply and Use of Cotton by Country 1 September 2020

	Area	Yield	Prod	Beg Stocks	Imports	Cons	Exports	End Stocks	S/U *	S/MU **
	000 Ha	Kgs/Ha	000 Metric Tonnes							Ratio
Canada				0.05	0.35	0.35		0.04	0.12	0.12
Cuba	4	269	1	1	2	3		1	0.19	0.19
Dom. Rep.					1	1		0	0.47	0.47
Mexico	245	1,692	414	182	183	440	113	226	0.41	0.51
USA	4,043	989	3,999	936	1	628	3,230	1,078	0.28	1.72
N. America	4,297	1,028	4,415	1,120	187	1,074	3,344	1,305	0.30	1.22
El Salvador				9	35	35		9	0.26	0.26
Guatemala				7	27	27		7	0.26	0.26
Honduras	0.14	318	0.04	0.19		0.00		0.23		
C. America	1	522	1	16	62	63		16	0.26	0.26
Argentina	333	773	257	347	1	167	118	320	1.12	1.91
Bolivia	4	640	3	2	1	3	0.22	2	0.50	0.53
Brazil	1,618	1,717	2,779	1,598	4	730	1,310	2,340	1.15	3.21
Chile				0.02	0.05	0.05		0	0.41	0.41
Colombia	15	870	13	4	27	40		4	0.10	0.10
Ecuador	1	439	1	3	10	11		3	0.31	0.31
Paraguay	10	420	4	2	2	3	2	3	0.72	1.35
Peru	25	819	21	39	47	59	1	46	0.77	0.78
Uruguay				0.001	0.009	0.009		0.001	0.06	0.06
Venezuela	15	392	6	3	5	10		3	0.30	0.30
S. America	2,022	1,525	3,083	1,997	96	1,024	1,431	2,722	1.11	2.66
Algeria				0.06	1	1		0	0.05	0.05
Egypt	142	782	111	98	105	145	71	98	0.46	0.68
Morocco				3	7	7		3	0.38	0.38
Sudan	180	578	104	16		18	86	16	0.15	0.89
Tunisia				3	12	12		3	0.22	0.22
N. Africa	322	668	215	120	126	184	157	120	0.35	0.65
Benin	656	449	295	146		1	292	147	0.50	107.48
Burkina Faso	646	283	183	137		3	200	116	0.57	38.82
Cameroon	250	530	132	60		2	125	66	0.52	34.85
Cent. Afr. Rep.	32	251	8	0.32			4	4	0.93	
Chad	60	117	7	14		0.26	14	6	0.43	24.32
Cote D'Ivoire	392	514	202	56		2	195	61	0.31	29.77
Guinea	12	286	3	1			3	2	0.58	
Madagascar				3				3		
Mali	698	395	276	66		2	300	40	0.13	19.79
Niger	4	469	2	0.24		1	1	0	0.11	0.25
Senegal	22	285	6	1		1	5	1	0.18	1.41
Togo	180	313	56	19			47	28	0.59	
F. Africa	2,953	396	1,171	504		12	1,187	475	0.40	38.60
Angola	3	304	1	0.29		1	0.24	0.29	0.34	0.48
Ethiopia	78	737	57	19	6	52	7	22	0.37	0.42
Ghana	15	373	5	12		1	4	12	2.22	9.28
Kenya	13	149	2	2	3	4	0.06	2	0.61	0.62
Malawi	86	248	21	3		3	9	12	0.99	3.99
Mozambique	140	151	21	15		1	20	15	0.69	
Nigeria	250	205	51	22	1	28	29	17	0.31	0.63
South Africa	42	1,142	48	33	15	19	31	45	0.89	2.34
Tanzania	420	193	81	23		44	43	18	0.20	0.40
Uganda	81	430	35	22		2	33	22	0.63	12.94
Congo, Dr				2	7	7		2	0.30	0.30
Zambia	140	190	27	40		2	34	30	0.85	
Zimbabwe	197	228	45	25		3	39	28	0.65	9.79
S. Africa	1,486	268	398	229	56	193	252	238	0.54	1.23
Kazakhstan	113	665	75	51	0	13	58	55	0.76	4.14
Kyrgyzstan	14	851	12	4	3	1	13	5	0.33	4.79
Tajikistan	191	535	102	34		15	85	36	0.36	2.43
Turkmenistan	534	561	300	91		141	143	106	0.37	0.75
Uzbekistan	900	712	641	259		630	127	144	0.19	0.23
C. Asia	1,752	645	1,130	439	3	800	427	345	2.01	0.43



2018/19 Supply and Use of Cotton by Country (cont'd) 1 September 2020

	Area	Yield	Prod	Beg Stocks	Imports	Cons	Exports	End Stocks	S/U *	S/MU **
	000 Ha	Kgs/Ha							000 Metric Tonnes	
Austria				1	3	3		1	0.18	0.18
Azerbaijan	143	672	96	34		20	66	44	0.50	2.13
Belarus				4	11	11		4	0.34	0.34
Belgium				1	7	3	4	1	0.19	0.43
Bulgaria	1	324	0.28	1	6	6	0.08	1	0.17	0.17
Czech Rep.				0.22	2	2		0.10	0.04	0.04
Denmark					0.01	0.01			0.12	
Estonia										
Finland										
France				2	9	8	1	1	0.14	0.17
Germany				9	19	16	3	9	0.49	0.57
Greece	277	1,083	300	38	7	16	298	31	0.10	1.89
Hungary				0.02				0		
Ireland				0.02	0.16	0.16		0	0.11	0.11
Italy				8	34	32	2	8	0.22	0.23
Latvia				0.01	0.26	0.20	0.06	0	0.03	0.04
Lithuania				0.10				0		
Moldova				1	2	2		1	0.34	0.34
Netherlands				0.45	4	4		0	0.11	
Norway										
Poland				1	2	2	0.29	1	0.60	0.63
Portugal				7	38	38	1	7	0.19	0.19
Romania				0.04	0.34	0.34		0	0.10	0.10
Russia	0.02	1,750	0.04	6	22	22	0.04	6	0.28	0.28
Slovak Rep.										
Spain	65	1,092	71	38	3	3	52	40	0.56	11.94
Sweden				0.01	0.01	0.01		0		
Switzerland				0.16	1	0.48	0.35	0	0.19	0.33
Ukraine				0.44	2	2		0	0.26	0.26
United Kingdom				0.03	0.25	0.25		0	0.12	0.12
Former Yugoslavia				1	7	7		1	0.19	0.19
Europe	486	962	467	154	179	199	427	158	0.25	0.79
Including EU-27	343	1,083	371	108	136	136	301	102	0.23	0.75
China	3,367	1,794	6,040	9,033	2,100	8,250	30	8,885	1.07	1.08
Hong Kong				30	0.47	0.41	0.06	30	51.93	
Australia	343	1,414	485	452		6	791	140	0.18	23.14
Indonesia	6	618	3	70	685	700		59	0.08	0.08
Japan				8	50	51		7	0.14	0.14
Korea, D.R.				1	5	5		1	0.24	0.24
Korea, Rep.				40	170	171	1	38	0.22	0.22
Malaysia				13	162	94	68	13	0.08	0.14
Philippines	0.01	570	0.01	5	13	13		5	0.35	0.35
Singapore				0	6		6	0	0.05	
Taiwan				21	138	138		21	0.15	0.15
Thailand	2	520	1	56	234	236		56	0.24	0.24
Vietnam	0.30	667	0.20	196	1,510	1,506		200	0.13	0.13
E. Asia	351	1,395	490	861	2,974	2,921	867	538	0.14	0.18
Afghanistan	36	387	14	5		4	11	4	0.25	0.90
Bangladesh	45	768	35	422	1,544	1,579		422	0.27	0.27
India	12,600	425	5,350	1,989	392	5,400	765	1,567	0.25	0.29
Myanmar	239	634	152	69	56	207	0	69	0.33	0.34
Pakistan	2,325	718	1,670	819	638	2,358	16	754	0.32	0.32
Sri Lanka				0	2	2		0	0.12	0.12
S. Asia	15,248	474	7,222	3,306	2,632	9,552	1,180	2,817	0.27	0.29
Iran	71	710	50	52	71	116		58	0.50	0.50
Iraq	9	362	3	2	5	8		2	0.24	0.24
Israel	4	2,009	9	2			8	2	0.27	
Syria	18	958	18	9		14	4	9	0.49	0.61
Turkey	518	1,885	977	918	762	1,555	105	997	0.60	0.64
Sub Total	624	1,696	1,058	987	855	1,712	117	1,071	0.59	0.63
World Total	32,927	780	25,697	18,801	9,273	25,994	9,054	18,723	0.72	0.72

*/ Ending stocks divided by consumption plus exports.

Subtotals and total include countries not shown.

**/ Ending stocks divided by consumption.



2019/20 Supply and Use of Cotton by Country 1 September 2020

	Area	Yield	Prod	Beg Stocks	Imports	Cons	Exports	End Stocks	S/U *	S/MU **
	000 Ha	Kgs/Ha	000 Metric Tonnes						Ratio	Ratio
Canada				0.04	0.31	0.31		0.04	0.13	0.13
Cuba	4	269	1	1	2	3		1	0.19	0.19
Dom. Rep.					1	1		0	0.47	0.47
Mexico	224	1,644	369	226	127	396	100	226	0.45	0.57
USA	4,700	923	4,336	1,078	1	472	3,353	1,590	0.42	3.37
N. America	4,933	954	4,707	1,305	132	874	3,453	1,817	0.42	2.08
El Salvador				9	35	35		9	0.24	0.24
Guatemala				7	27	27		6	0.23	0.23
Honduras	0.10	318	0.03	0.23		0.00		0.27		
C. America	1	522	0.50	16	61	63		15	0.24	0.24
Argentina	455	736	335	320	1	134	94	428	1.88	3.19
Bolivia	4	641	3	2	1	3	0.2	2	0.50	0.53
Brazil	1,671	1,753	2,930	2,340	3	610	1,979	2,684	1.04	4.40
Chile				0	0	0		0	0.41	0.41
Colombia	21	847	17	4	19	36		4	0.11	0.11
Ecuador	1	439	1	3	10	11		3	0.31	0.31
Paraguay	10	420	4	3	1	2	4	2	0.34	0.98
Peru	24	819	20	46	40	59	1	46	0.78	0.79
Uruguay				0.001	0.01	0.01		0.001	0.06	0.06
Venezuela	14	392	6	3	5	10		3	0.30	0.30
S. America	2,200	1,507	3,315	2,722	80	865	2,078	3,173	1.08	3.67
Algeria				0.06	1	1		0.06	0.07	0.07
Egypt	102	657	67	98	83	102	48	98	0.66	0.97
Morocco				3	7	7		3	0.40	0.40
Sudan	180	722	130	16		18	79	49	0.50	2.72
Tunisia				3	12	12		3	0.22	0.22
N. Africa	282	699	197	120	103	140	127	153	0.57	1.09
Benin	666	467	311	147		1	224	234	1.04	243.16
Burkina Faso	579	333	193	116		3	154	152	0.96	50.57
Cameroon	250	559	140	66		2	106	98	0.91	51.75
Cent. Afr. Rep.	34	252	9	4			9	4	0.44	
Chad	248	298	74	6		0.20	60	20	0.33	100.61
Cote d'Ivoire	408	516	211	61		2	145	125	0.85	61.22
Guinea	12	287	4	2			4	2	0.44	
Madagascar				3				3		
Mali	738	404	299	40		2	229	107	0.46	53.49
Niger	5	470	2	0.24		1	1	0	0.11	0.25
Senegal	16	408	6	1		1	5	2	0.34	2.44
Togo	181	265	48	28			38	38	0.99	
F. Africa	3,137	413	1,295	475		12	974	784	0.80	66.24
Angola	3	308	1	0.29		1	0.28	0.29	0.33	0.48
Ethiopia	82	741	60	22	3	54	7	24	0.40	0.45
Ghana	15	375	6	12		1	4	12	2.14	9.24
Kenya	40	100	4	2	3	4	0	5	1.34	1.36
Malawi	85	249	21	12		3	14	16	0.98	5.44
Mozambique	135	165	22	15		1	18	18	0.92	
Nigeria	130	342	44	17	1	25	23	15	0.30	0.59
South Africa	28	954	27	45	8	13	35	32	0.66	2.47
Tanzania	441	247	109	18		45	41	40	0.47	0.90
Uganda	89	416	37	22		4	23	32	1.18	8.65
Congo, Dr				2	7	7		2	0.30	0.30
Zambia	137	190	26	30		2	30	24	0.75	
Zimbabwe	174	340	59	28		3	33	51	1.46	18.30
S. Africa	1,380	305	421	238	48	190	231	286	0.68	1.51
Kazakhstan	117	669	78	55	0.05	13	58	61	0.86	4.56
Kyrgyzstan	14	855	12	5	3	1	13	5	0.36	5.41
Tajikistan	196	538	106	36		15	82	45	0.47	3.04
Turkmenistan	545	564	307	106		141	149	123	0.42	0.87
Uzbekistan	900	712	641	144		578	64	144	0.22	0.25
C. Asia	1,772	646	1,144	345	3	748	366	378	2.33	0.51



2019/20 Supply and Use of Cotton by Country (cont'd) 1 September 2020

	Area	Yield	Prod	Beg Stocks	Imports	Cons	Exports	End Stocks	S/U *	S/MU **
	000 Ha	Kgs/Ha							000 Metric Tonnes	
Austria				1	3	3		1	0.19	0.19
Azerbaijan	146	677	99	44		29	63	51	0.55	1.73
Belarus				4	11	11		4	0.34	0.34
Belgium				1	7	3	4	1	0.19	0.44
Bulgaria	1	324	0.26	1	6	6	0.08	1	0.17	0.17
Czech Rep.				0.10	2	2		0.14	0.07	0.07
Denmark										
Estonia										
Finland										
France				1	8	8	1	1	0.11	0.12
Germany				9	16	15	3	8	0.43	0.51
Greece	277	1,264	350	31	7	16	320	51	0.15	3.18
Hungary				0.02				0		
Ireland				0.02	0.15	0.15		0	0.12	0.12
Italy				8	32	31	1	8	0.23	0.24
Latvia				0.01	0.26	0.20	0.06	0	0.03	0.04
Lithuania				0.10				0		
Moldova				1	2	2		1	0.34	0.34
Netherlands				0.45	4	4		0	0.11	
Norway										
Poland				1	2	2	0.29	1	0.59	0.65
Portugal				7	36	36	1	7	0.20	0.20
Romania				0.04	0.33	0.33		0	0.11	0.11
Russia	0.02	1,759	0.04	6	22	22	0	6	0.27	0.27
Slovak Rep.										
Spain	66	1,061	70	40	3	3	52	45	0.66	13.83
Sweden				0.01	0.01	0.01		0.01		
Switzerland				0.16	1	0.46	0.35	0.16	0.19	0.34
Ukraine				0.44	2	2		0.44	0.27	0.27
United Kingdom				0.03	0.25	0.25		0.03	0.11	0.11
Former Yugoslavia				1	7	7		1	0.19	0.19
Europe	490	1,060	519	158	172	203	445	188	0.29	0.93
Including EU-27	344	1,222	420	102	129	131	301	125	0.29	0.96
China	3,300	1,758	5,800	8,885	1,750	7,250	30	9,135	1.25	1.26
Hong Kong				30	0.23	0.39	0.06	30	53.01	
Australia	61	2,231	135	140		6	235	34	0.14	5.93
Indonesia	5	621	3	59	630	630		62	0.10	0.10
Japan				7	48	48		7	0.14	0.14
Korea, D.R.				1	5	5		1	0.24	0.24
Korea, Rep.				38	136	136		38	0.28	0.28
Malaysia				13	162	101	61	13	0.08	0.13
Philippines	0.01	573	0.01	5	14	14		5	0.34	0.34
Singapore				0.33	6		6	0	0.05	
Taiwan				21	104	104		21	0.20	0.20
Thailand	2	522	1	56	211	212		56	0.26	0.26
Vietnam	0.30	667	0.20	200	1,460	1,446		214	0.15	0.15
E. Asia	68	2,047	140	538	2,776	2,701	302	450	0.15	0.17
Afghanistan	36	387	14	4		4	11	3	0.19	0.68
Bangladesh	46	772	35	422	1,374	1,374		458	0.33	0.33
India	13,300	466	6,200	1,567	470	4,250	650	3,337	0.68	0.79
Myanmar	239	634	152	69	24	187		59	0.31	0.31
Pakistan	2,432	543	1,320	754	627	2,204	10	486	0.22	0.22
Sri Lanka				0.20	2	2		0	0.11	0.11
S. Asia	16,056	481	7,723	2,817	2,497	8,023	1,180	4,343	0.50	0.54
Iran	71	711	50	58	54	104		58	0.56	0.56
Iraq	9	362	3	2	5	8		2	0.24	0.24
Israel	4	1,851	8	2			8	2	0.28	
Syria	18	968	17	9		14	3	9	0.51	0.63
Turkey	478	1,705	815	997	900	1,477	80	1,155	0.74	0.78
Sub Total	583	1,536	895	1,071	977	1,622	92	1,229	0.72	0.76
World Total	34,220	765	26,163	18,723	8,602	22,701	8,802	21,984	0.97	0.97

*/ Ending stocks divided by consumption plus exports.

Subtotals and total include countries not shown.

**/ Ending stocks divided by consumption.



2020/21 Supply and Use of Cotton by Country 1 September 2020

	Area	Yield	Prod	Beg Stocks	Imports	Cons	Exports	End Stocks	S/U *	S/MU **
	000 Ha	Kgs/Ha	000 Metric Tonnes						Ratio	Ratio
Canada				0.04	0.28	0.28		0.04	0.13	0.13
Cuba	4	271	1	1	2	3		1	0.19	0.19
Dom. Rep.					1	1		0.46	0.47	0.47
Mexico	145	1,562	227	226	227	396	108	176	0.35	0.44
USA	3,742	1,052	3,936	1,590	1	584	3,266	1,677	0.44	2.87
N. America	3,898	1,069	4,165	1,817	232	986	3,374	1,855	0.43	1.88
El Salvador				9	35	35		9	0.24	0.24
Guatemala				6	27	27		6	0.21	0.21
Honduras	0.10	318	0.03	0.27	0.00	0.00		0		
C. America	1	515	0.38	15	62	63	0.02	15	0.24	0.24
Argentina	360	657	237	428	1	135	102	428	1.81	3.18
Bolivia	4	641	3	2	1	3	0	2	0.50	0.53
Brazil	1,429	1,754	2,505	2,684	3	610	1,577	3,006	1.37	4.93
Chile				0.02	0.05	0.05		0.02	0.41	0.41
Colombia	18	847	16	4	20	36		4	0.11	0.11
Ecuador	1	440	1	3	10	11		3	0.31	0.31
Paraguay	10	420	4	2		1	3	2	0.54	1.95
Peru	23	819	19	46	40	59	1	46	0.78	0.79
Uruguay				0.00	0.01	0.01		0	0.06	0.06
Venezuela	14	392	6	3	5	10		3	0.31	0.31
S. America	1,860	1,500	2,790	3,173	80	865	1,683	3,495	1.37	4.04
Algeria				0	1	1		0.06	0.07	0.07
Egypt	102	660	67	98	76	100	44	98	0.69	0.99
Morocco				3	7	7		3	0.41	0.41
Sudan	180	722	130	49		18	104	57	0.46	3.15
Tunisia				3	12	12		3	0.22	0.22
N. Africa	282	700	197	153	96	138	148	161	0.56	1.17
Benin	700	467	327	234		1	277	282	1.01	293.75
Burkina Faso	686	333	228	152		3	212	165	0.77	54.90
Cameroon	250	559	140	98		2	148	88	0.59	46.23
Cent. Afr. Rep.	34	252	9	4			9	4	0.45	
Chad	252	298	75	20		0.20	61	34	0.55	168.02
Cote d'Ivoire	433	516	224	125		2	226	121	0.53	59.12
Guinea	13	287	4	2			4	2	0.45	
Madagascar				3				3		
Mali	810	404	328	107		2	327	106	0.32	52.75
Niger	5	470	2	0.24		1	1	0	0.11	0.25
Senegal	25	408	10	1.91		1	7	5	0.61	5.88
Togo	190	265	50	38			50	38	0.75	
F. Africa	3,397	411	1,396	784		12	1,323	846	0.63	71.42
Angola	3	308	1	0		1	0.26	0.29	0.34	0.48
Ethiopia	82	741	61	24	3	55	7	27	0.43	0.49
Ghana	15	375	6	12	1	1	6	12	1.75	9.24
Kenya	40	100	4	5	3	8		4	0.55	0.55
Malawi	84	249	21	16		3	23	12	0.45	3.87
Mozambique	134	166	22	18		1	27	11	0.40	8.81
Nigeria	264	342	90	15	1	30	36	40	0.61	1.35
South Africa	28	1,002	28	32	8	13	35	20	0.41	1.55
Tanzania	437	247	108	40		45	41	62	0.72	1.38
Uganda	101	426	43	32		4	39	32	0.74	7.44
Congo, Dr				2	7	7		2	0.30	0.30
Zambia	136	190	26	24		2	12	36	2.63	20.20
Zimbabwe	172	340	59	51		3	33	74	2.08	26.43
S. Africa	1,516	312	472	286	49	200	260	347	0.75	1.74
Kazakhstan	119	669	80	61	0.05	13	66	61	0.77	4.56
Kyrgyzstan	14	855	12	5	3	1	14	5	0.34	5.41
Tajikistan	196	538	106	45		15	91	45	0.43	3.04
Turkmenistan	556	564	314	123		143	146	148	0.51	1.03
Uzbekistan	900	712	641	144		578	64	144	0.22	0.25
C. Asia	1,786	645	1,152	378	3	750	381	403	2.28	0.54



2020/21 Supply and Use of Cotton by Country (cont'd) 1 September 2020

	Area	Yield	Prod	Beg Stocks	Imports	Cons	Exports	End Stocks	S/U *	S/MU **
	000 Ha	Kgs/Ha							000 Metric Tonnes	
Austria				1	3	3		1	0.20	0.20
Azerbaijan	100	677	68	51		29	38	51	0.75	1.72
Belarus				4	11	11		4	0.34	0.34
Belgium				1	7	3	4	1	0.19	0.46
Bulgaria	1	324	0.26	1	6	6	0.08	1	0.17	0.17
Czech Rep.				0.14	2	2		0	0.07	0.07
Denmark					0.01	0.01				
Estonia										
Finland										
France				1	9	8	1	1	0.11	0.12
Germany				8	17	14	3	8	0.45	0.54
Greece	277	1,173	325	51	7	16	325	42	0.12	2.59
Hungary				0				0		
Ireland				0	0	0		0	0.12	0.12
Italy				8	31	29	1	8	0.24	0.26
Latvia				0.01	0.26	0.20	0.06	0	0.03	0.04
Lithuania				0.10				0		
Moldova				1	2	2		1	0.34	0.34
Netherlands				0.45	4	4		0	0.11	0.11
Norway										
Poland				1	2	2	0.20	1	0.59	0.65
Portugal				7	36	36		7	0.20	0.20
Romania				0.04	0.33	0.33		0	0.11	0.11
Russia	0.02	1,759	0.04	6	22	22	0.04	6	0.26	0.26
Slovak Rep.				0				0		
Spain	66	1,061	70	45	3	3	70	45	0.62	13.83
Sweden				0.01	0.01	0.01		0	0.81	0.81
Switzerland				0.16	1	0.46	0.35	0	0.19	0.34
Ukraine				0.44	2	2		0	0.27	0.27
United Kingdom				0.03	0.25	0.25		0	0.11	0.11
Former Yugoslavia				6	7	7	1	5	0.66	0.76
Europe	444	1,043	463	193	171	201	444	182	0.28	0.91
Including EU-27	344	1,150	395	125	134	133	419	116	0.21	0.87
China	3,211	1,769	5,680	9,135	2,000	7,800	50	8,965	1.14	1.15
Hong Kong				30	0.23	0.39	0.17	30	52.42	75.45
Australia	152	2,375	361	34		6	270	119	0.43	20.75
Indonesia	5	621	3	62	637	640		62	0.10	0.10
Japan				7	50	51		6	0.13	0.13
Korea, D.R.				1	5	5		1	0.15	0.15
Korea, Rep.				38	143	143		38	0.26	0.26
Malaysia				13	202	135	67	13	0.07	0.10
Philippines	0.011	573	0.006	5	14	14		5	0.34	0.34
Singapore				0	6		6	0	0.05	
Taiwan				21	105	105		21	0.20	0.20
Thailand	2	522	1	56	226	217		66	0.30	0.30
Vietnam	0.30	582	0.36	214	1,484	1,482		216	0.15	0.15
E. Asia	159	2,296	365	450	2,871	2,797	344	546	0.17	0.20
Afghanistan	36	387	14	3		4	10	3	0.20	0.68
Bangladesh	46	772	35	458	1,390	1,408		475	0.34	0.34
India	12,635	491	6,200	3,337	370	5,100	1,155	3,652	0.58	0.72
Myanmar	239	634	152	59	25	187		49	0.26	0.26
Pakistan	2,189	543	1,188	486	982	2,160	10	486	0.22	0.23
Sri Lanka				0	2	2		0	0.11	0.11
S. Asia	15,148	501	7,591	4,343	2,770	8,863	1,159	4,666	0.46	0.53
Iran	71	711	50	58	54	104		58	0.56	0.56
Iraq	9	362	3	2	5	8		2	0.24	0.24
Israel	4	1,693	8	2			8	2	0.19	
Syria	25	973	24	9		15	8	9	0.39	0.61
Turkey	400	1,722	689	1,155	859	1,507	76	1,120	0.71	0.74
Sub Total	512	1,515	775	1,229	936	1,653	93	1,193	0.68	0.72
World Total	32,231	777	25,055	21,989	9,274	24,336	9,274	22,707	0.93	0.93

*/ Ending stocks divided by consumption plus exports.

Subtotals and total include countries not shown.

**/ Ending stocks divided by consumption.